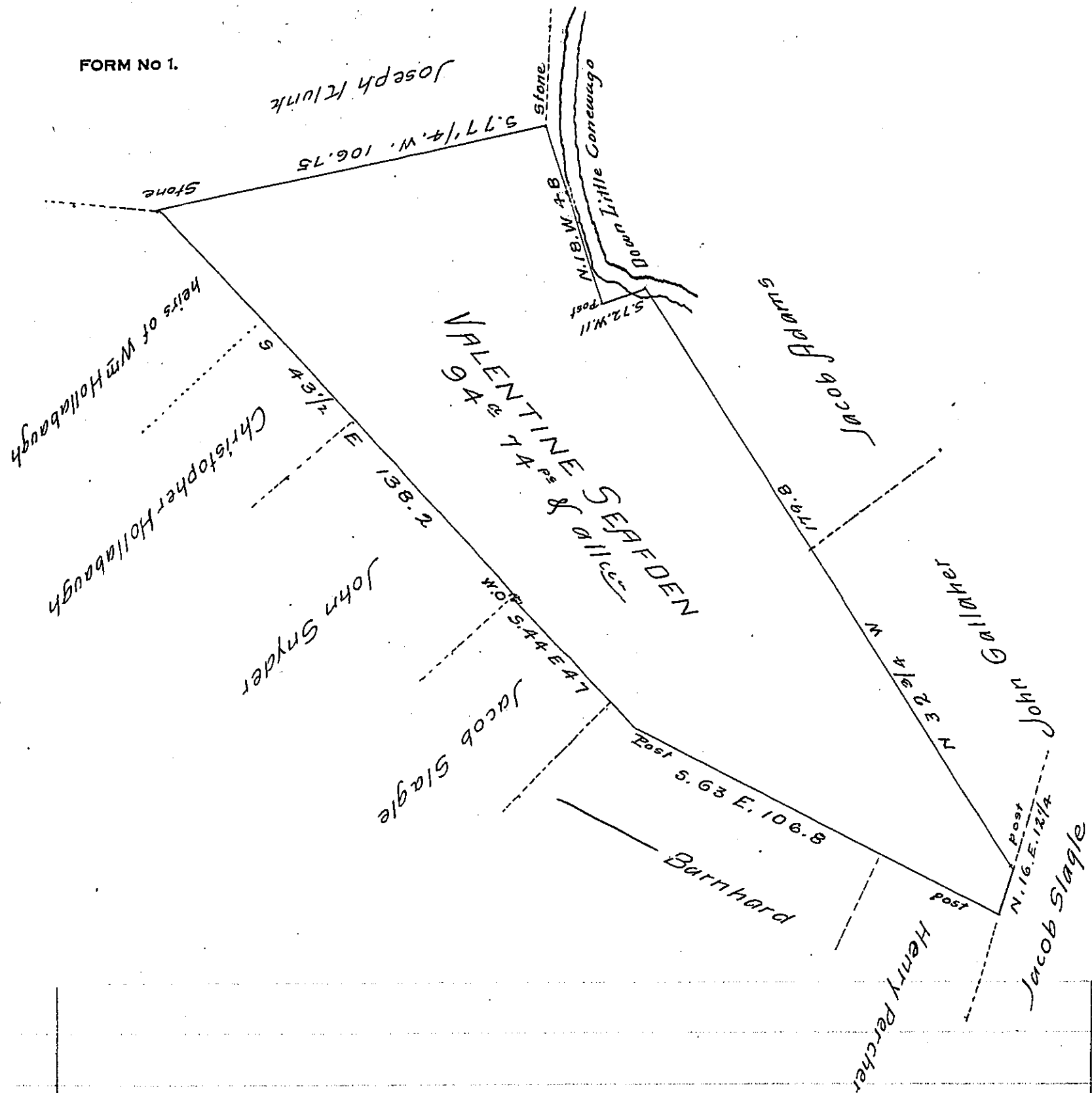


FORM No 1.



Situate in Mountpleasant Township Adams County. Surveyed
 Nov^r 27th 1751 by George Stevenson D.S. in pursuance of a
 Warrant granted to Valentine Seafden (or Seafdel) dated
 November 22nd 1749 for 100^{ac}. Resurveyed August 14th 1810
 Containing Ninety four acres Seventy four perches and allies
 By Sam^l Sloan D.S.

To Andrew Porter Esq^r
 Surveyor General

IN TESTIMONY that the above is a copy of the original remaining on file in
 the Department of Internal Affairs of Pennsylvania, made
 conformably to an Act of Assembly approved the 16th day of
 February, 1833, I have hereunto set my Hand and caused
 the Seal of said Department to be affixed at Harrisburg,
 this fourth day of February 1907

Loac R. Brown
 Secretary of Internal Affairs.